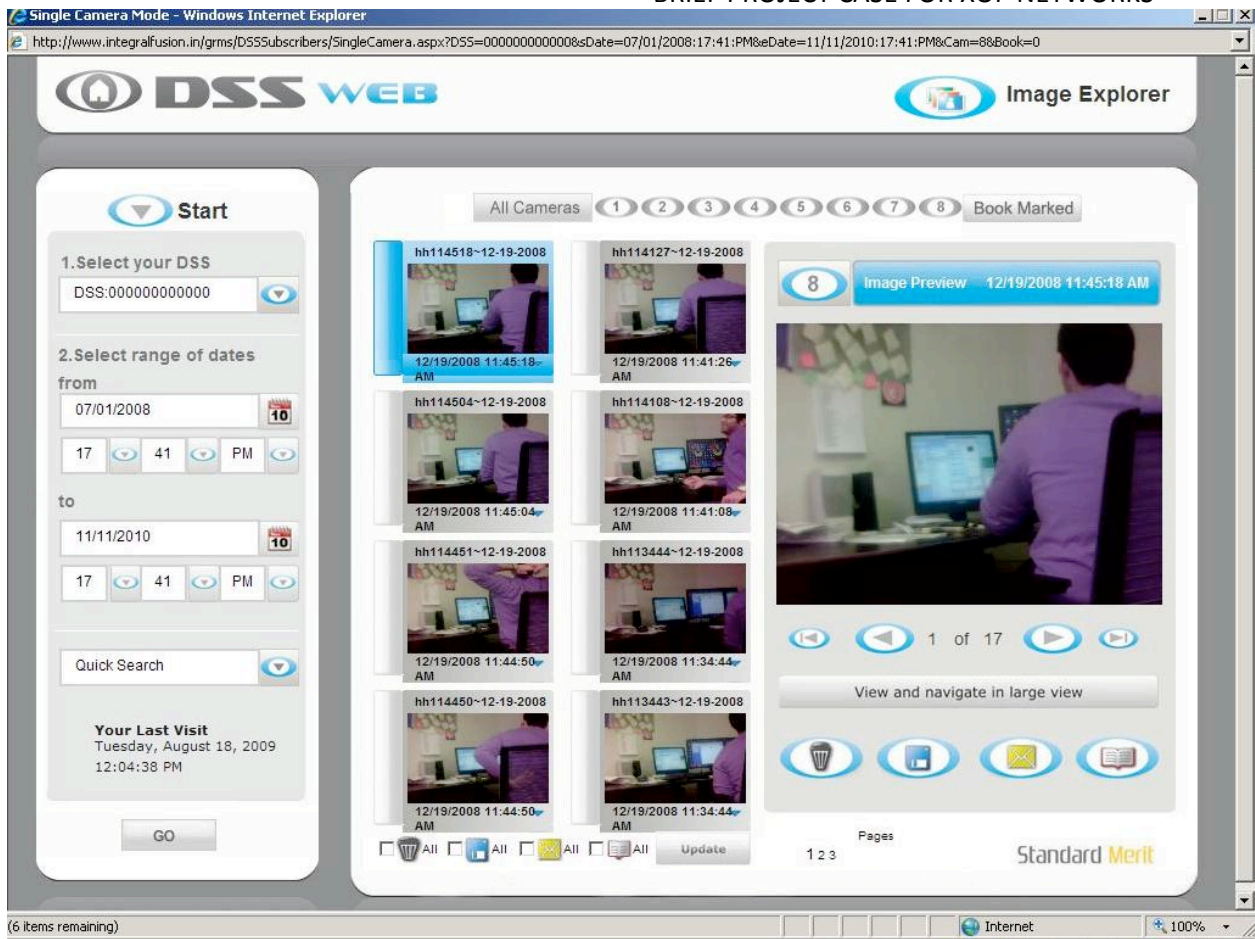


<p>Client Profile Founded in 2002, Standard Merit designs, manufactures and markets a range of consumer electronics and personal security devices. Their products serve Firefighters, Police, Emergency Response Personnel and General Household Users. Standard Merit is diversified into offering various product lines for its clients worldwide with distributorship across the globe.</p> <p>Project Brief Integral Fusion developed and installed a fully integrated Digital Surveillance System (DSS) application for Standard Merit of USA to enable them to monitor and record video surveillance images from remote locations. The development effort for this project was about 1320 man days and there were more than a couple of challenges implementing this project live at the client site. Yet, our development and customer support team made relentless effort to make the delivery and installation a spectacular and timely success.</p> <p>Highlights of the application features - Comprehensive and user friendly GUI interface provides ease of use - Manual image synchronization utility for image transfer between control units and storage devices - Desktop and web-based interface for exploring and monitoring images - Automatic image synchronization based on predefined schedule - Customized installation process which automatically checks for the device before installation</p> <p>About Integral Fusion Integral Fusion is an emerging technology company with focus on next generation technology. Our trained & experienced resource pool includes project managers, database administrators, system architects, network engineers, business analysts, helpdesk professionals, programmer analysts and systems engineers. Integral Fusion has established over 100 Clients worldwide so far; it is one of the fastest growing IT Companies in Asia, having staff presence in United States, South Africa, Europe & India. For further information please check out our website at www.integralfusion.in</p> <p>Contact Information For more details, please email us at rsethi@integralfusion.in</p>	<p>Project Overview Country / Region - United States Industry - Security & Resellers Scope – Development and installation</p> <p>Application details Digital Surveillance System is a standalone video surveillance system which comes with an integrated camera and a motion sensor, doorbell with intercom, LCD control unit and a single accessory camera with integrated motion sensor. Live footage of the visitor can be seen and photographed using motion sensors even in unattended situations on fixed schedule.</p> <p>Value Addition for client and installation challenges Integral Fusion was engaged by Standard Merit to implement a customized DSS system on a turnkey basis. IntegralFusion successfully executed the work with minimal interference to existing process at the client site. It took 5 people working for nearly 12 months to complete the development, installation and testing of the devices at the client site. Our installation team optimized communication process for better integration with DSS control units. Streamlining the DSS desktop application processes and integrating it with remote DSS web application processes was a unique challenge for the team.</p> <p>Unique challenges faced in this project</p> <table border="1"> <tr> <td data-bbox="532 688 824 1234"> <p>Manageability</p> <p>Defining and managing the role of each stakeholder using the application</p> <p>Supporting communications with multiple DSS Control Unit(s) connected with the Computer from one central location</p> <p>Providing access to remote E-commerce based surveillance system based on subscript</p> <p>Providing manual image synchronization for remote data migration which will upload selected pictures to customers' remote account.</p> </td> <td data-bbox="824 688 1125 1234"> <p>Scalability</p> <p>Number of camera channels supported per DSS device is 8 and customers might need it to be extensible for which a software option was provided to extend it for coupling multiple DSS</p> <p>Video resolution, by default is 600 X 480</p> <p>There are 2 Video frame transfer rates, the normal transfer rate has a 3-4 second delay and the high transfer rate has a delay of 1 second with 15 fps.</p> </td> <td data-bbox="1125 688 1417 1234"> <p>System Performance:</p> <p>Multithreaded application environment provides faster processing and storage</p> <p>Live update feature for instant update of the software over the internet was provided for easy maintenance</p> <p>Local database of meta-data was provided for enhanced speed of backup and restoration</p> <p>Image explorer enhances the speed and provides advanced search functionality.</p> </td> </tr> </table> <p>Hardware components of DSS</p> <table border="1"> <tr> <td data-bbox="532 1287 824 1707"> <p>Control Unit:</p> <ul style="list-style-type: none"> • Color video with 2.5" LCD • 128MB internal memory (capacity to store up to 6000 images) • Power adaptor (5.5V DC) or Powered by (4) AA rechargeable batteries <ul style="list-style-type: none"> • USB port connection • Up to 8 channels • Table top or wall mounting • Hand held design • Built-in intercom capability • Backlit control buttons • Internet uploading feature for remote-location access </td> <td data-bbox="824 1287 1125 1707"> <p>Doorbell Unit:</p> <ul style="list-style-type: none"> • Simple integration to existing doorbell location • Night vision enabled with infrared lenses • CMOS Motion sensor • Mini video camera is built-in • Intercom capability • Control Unit for Wireless communication • Backlit doorbell </td> <td data-bbox="1125 1287 1417 1707"> <p>Accessory Camera Unit:</p> <ul style="list-style-type: none"> • Built-in mini video camera • Uses (3) AA batteries • Easy wall mounting installation • Night vision enabled with infrared • Motion sensor using CMOS sensor with lense • Wireless communication to Control Unit via SmartRF 2.4 Ghz Wireless Transmission </td> </tr> </table> <p>Technical specs of DSS software</p> <table border="1"> <tr> <td data-bbox="532 1759 979 1927"> <p>DSS Web Version software specifications</p> <p>Internet Explorer 6.0 /7.0, Windows XP O/S, .Net Framework 2.0, Microsoft Visual J# 2.0 Redistribution Package</p> </td> <td data-bbox="979 1759 1417 1927"> <p>DSS Windows Version Software Specifications</p> <p>Windows XP O/S, .Net Framework 1.1 and 2.0, Microsoft Visual J# 2.0 Redistribution Package</p> </td> </tr> </table> <p>The software components were packaged using Install Shield 2008 Premium edition.</p>	<p>Manageability</p> <p>Defining and managing the role of each stakeholder using the application</p> <p>Supporting communications with multiple DSS Control Unit(s) connected with the Computer from one central location</p> <p>Providing access to remote E-commerce based surveillance system based on subscript</p> <p>Providing manual image synchronization for remote data migration which will upload selected pictures to customers' remote account.</p>	<p>Scalability</p> <p>Number of camera channels supported per DSS device is 8 and customers might need it to be extensible for which a software option was provided to extend it for coupling multiple DSS</p> <p>Video resolution, by default is 600 X 480</p> <p>There are 2 Video frame transfer rates, the normal transfer rate has a 3-4 second delay and the high transfer rate has a delay of 1 second with 15 fps.</p>	<p>System Performance:</p> <p>Multithreaded application environment provides faster processing and storage</p> <p>Live update feature for instant update of the software over the internet was provided for easy maintenance</p> <p>Local database of meta-data was provided for enhanced speed of backup and restoration</p> <p>Image explorer enhances the speed and provides advanced search functionality.</p>	<p>Control Unit:</p> <ul style="list-style-type: none"> • Color video with 2.5" LCD • 128MB internal memory (capacity to store up to 6000 images) • Power adaptor (5.5V DC) or Powered by (4) AA rechargeable batteries <ul style="list-style-type: none"> • USB port connection • Up to 8 channels • Table top or wall mounting • Hand held design • Built-in intercom capability • Backlit control buttons • Internet uploading feature for remote-location access 	<p>Doorbell Unit:</p> <ul style="list-style-type: none"> • Simple integration to existing doorbell location • Night vision enabled with infrared lenses • CMOS Motion sensor • Mini video camera is built-in • Intercom capability • Control Unit for Wireless communication • Backlit doorbell 	<p>Accessory Camera Unit:</p> <ul style="list-style-type: none"> • Built-in mini video camera • Uses (3) AA batteries • Easy wall mounting installation • Night vision enabled with infrared • Motion sensor using CMOS sensor with lense • Wireless communication to Control Unit via SmartRF 2.4 Ghz Wireless Transmission 	<p>DSS Web Version software specifications</p> <p>Internet Explorer 6.0 /7.0, Windows XP O/S, .Net Framework 2.0, Microsoft Visual J# 2.0 Redistribution Package</p>	<p>DSS Windows Version Software Specifications</p> <p>Windows XP O/S, .Net Framework 1.1 and 2.0, Microsoft Visual J# 2.0 Redistribution Package</p>
<p>Manageability</p> <p>Defining and managing the role of each stakeholder using the application</p> <p>Supporting communications with multiple DSS Control Unit(s) connected with the Computer from one central location</p> <p>Providing access to remote E-commerce based surveillance system based on subscript</p> <p>Providing manual image synchronization for remote data migration which will upload selected pictures to customers' remote account.</p>	<p>Scalability</p> <p>Number of camera channels supported per DSS device is 8 and customers might need it to be extensible for which a software option was provided to extend it for coupling multiple DSS</p> <p>Video resolution, by default is 600 X 480</p> <p>There are 2 Video frame transfer rates, the normal transfer rate has a 3-4 second delay and the high transfer rate has a delay of 1 second with 15 fps.</p>	<p>System Performance:</p> <p>Multithreaded application environment provides faster processing and storage</p> <p>Live update feature for instant update of the software over the internet was provided for easy maintenance</p> <p>Local database of meta-data was provided for enhanced speed of backup and restoration</p> <p>Image explorer enhances the speed and provides advanced search functionality.</p>							
<p>Control Unit:</p> <ul style="list-style-type: none"> • Color video with 2.5" LCD • 128MB internal memory (capacity to store up to 6000 images) • Power adaptor (5.5V DC) or Powered by (4) AA rechargeable batteries <ul style="list-style-type: none"> • USB port connection • Up to 8 channels • Table top or wall mounting • Hand held design • Built-in intercom capability • Backlit control buttons • Internet uploading feature for remote-location access 	<p>Doorbell Unit:</p> <ul style="list-style-type: none"> • Simple integration to existing doorbell location • Night vision enabled with infrared lenses • CMOS Motion sensor • Mini video camera is built-in • Intercom capability • Control Unit for Wireless communication • Backlit doorbell 	<p>Accessory Camera Unit:</p> <ul style="list-style-type: none"> • Built-in mini video camera • Uses (3) AA batteries • Easy wall mounting installation • Night vision enabled with infrared • Motion sensor using CMOS sensor with lense • Wireless communication to Control Unit via SmartRF 2.4 Ghz Wireless Transmission 							
<p>DSS Web Version software specifications</p> <p>Internet Explorer 6.0 /7.0, Windows XP O/S, .Net Framework 2.0, Microsoft Visual J# 2.0 Redistribution Package</p>	<p>DSS Windows Version Software Specifications</p> <p>Windows XP O/S, .Net Framework 1.1 and 2.0, Microsoft Visual J# 2.0 Redistribution Package</p>								



POP UP WINDOW

